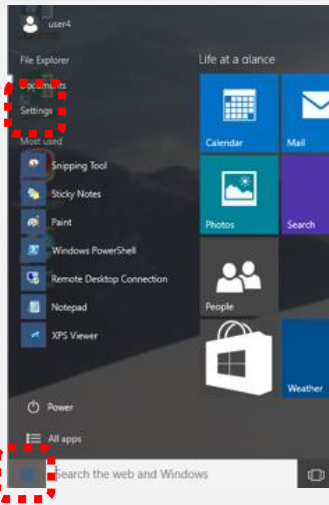
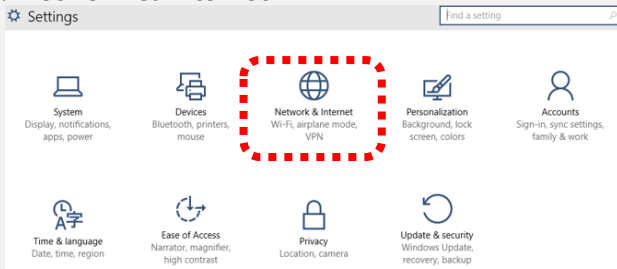


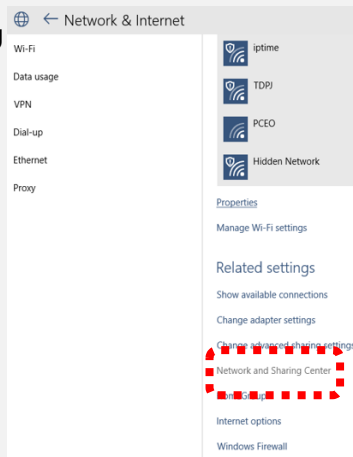
1. Start → Settings



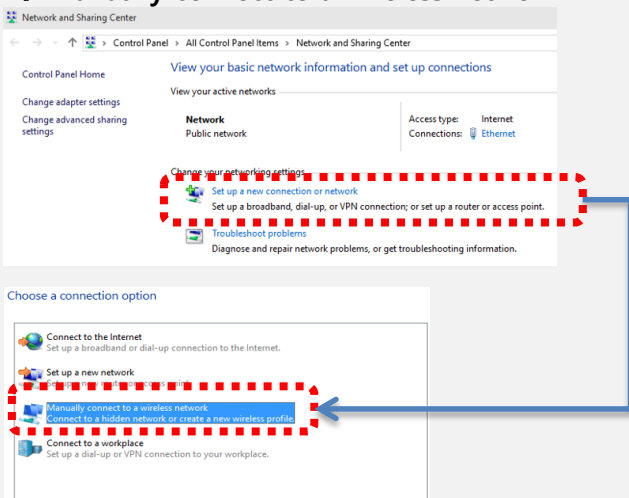
2. Network & Internet



3. Network and Sharing Center

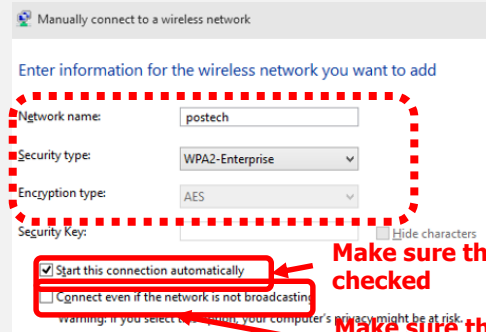


4. Set up a new connection or network → Manually connect to a wireless network



5. Enter information for the wireless network

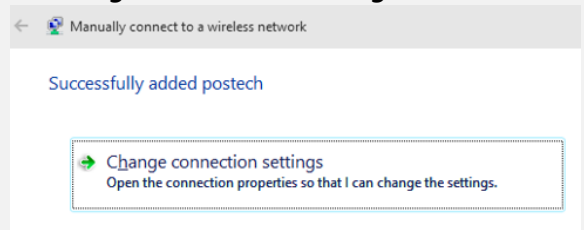
- Network Name: postech
- Security type: WPA2-Enterprise
- Encryption type: AES



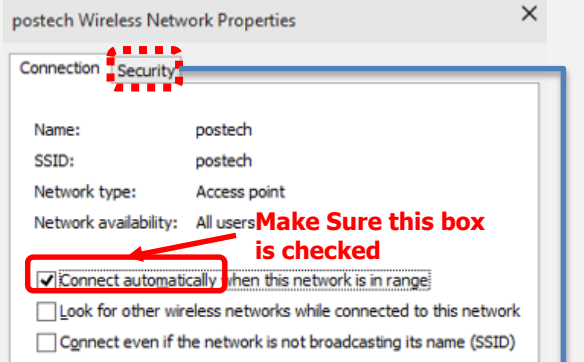
Make sure the box is checked

Make sure the box is unchecked

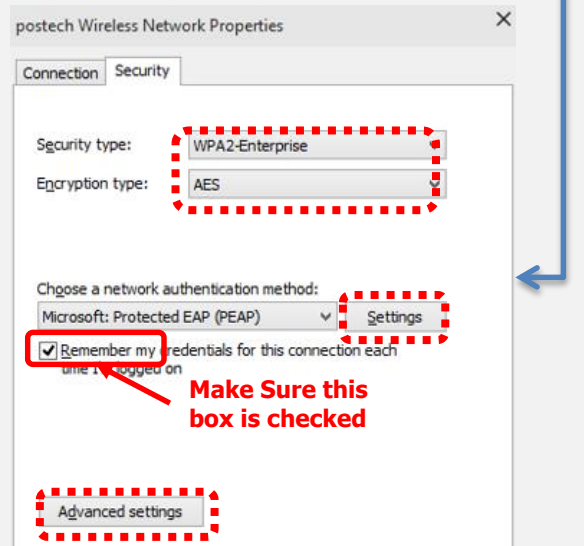
6. Successfully added postech → Change connection settings



7. postech Wireless Network Properties

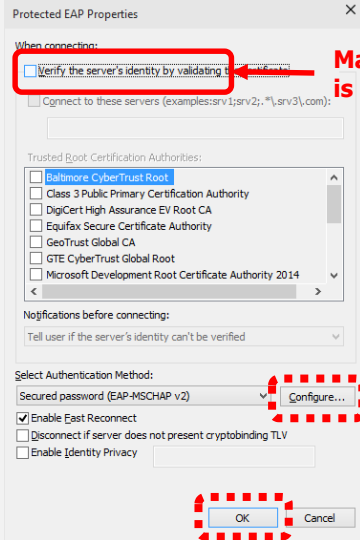


Make Sure this box is checked



Make Sure this box is checked

7-1. Settings



Protected EAP Properties

When connecting:
 Verify the server's identity by validating certificates. **Make sure this box is unchecked**

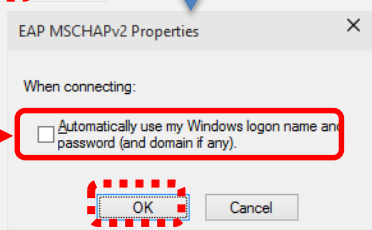
Trusted Root Certification Authorities:
 Baltimore CyberTrust Root
 Class 3 Public Primary Certification Authority
 DigiCert High Assurance EV Root CA
 Equifax Secure Certificate Authority
 GeoTrust Global CA
 GTE CyberTrust Global Root
 Microsoft Development Root Certificate Authority 2014

Notifications before connecting:
Tell user if the server's identity can't be verified

Select Authentication Method:
Secured password (EAP-MSCHAP v2) **Configure...**

Enable Fast Reconnect
 Disconnect if server does not present cryptobinding TLV
 Enable Identity Privacy

OK **Cancel**

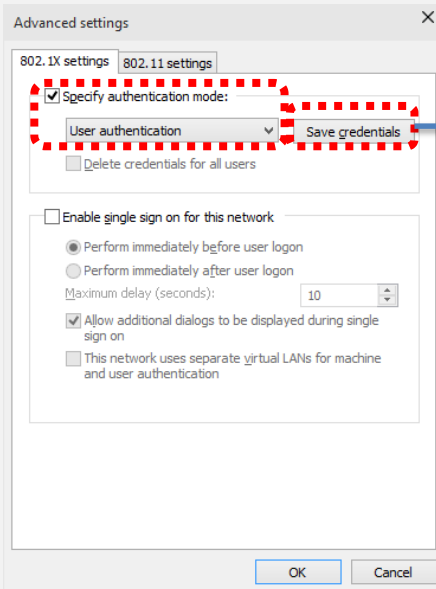


EAP MSCHAPv2 Properties

When connecting:
 Automatically use my Windows logon name and password (and domain if any). **Make sure this box is unchecked**

OK **Cancel**

7-2. Advanced settings



Advanced settings

802.1X settings | 802.11 settings

Specify authentication mode:
User authentication | **Save credentials**

Delete credentials for all users

Enable single sign on for this network

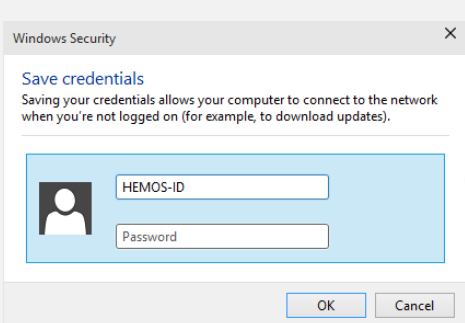
- Perform immediately before user logon
- Perform immediately after user logon

Maximum delay (seconds): 10

Allow additional dialogs to be displayed during single sign on

This network uses separate virtual LANs for machine and user authentication

OK **Cancel**



Windows Security

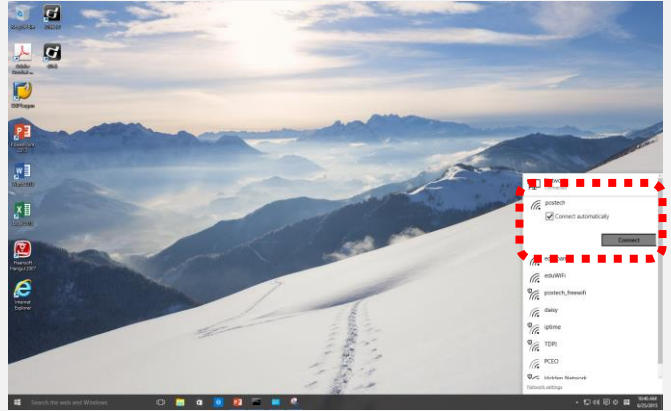
Save credentials

Saving your credentials allows your computer to connect to the network when you're not logged on (for example, to download updates).

HEMOS-ID
Password

OK **Cancel**

8. postech wireless network connect



Reference) eduroam, international free WiFi roaming service

- Same as postech Wi-Fi
- Login ID: your-ID@your-Domain