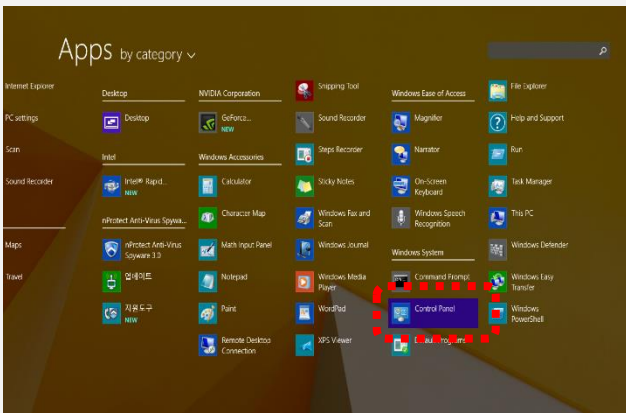
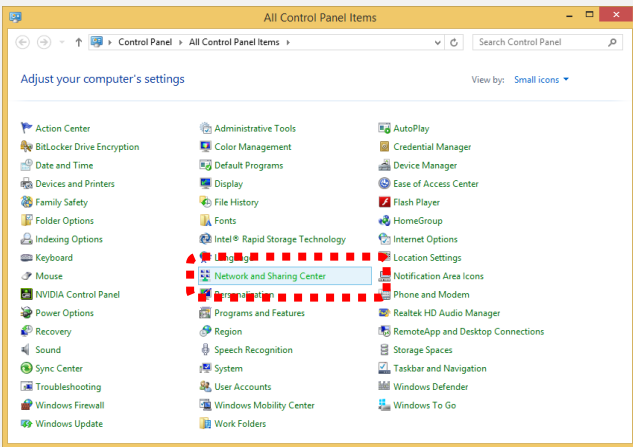


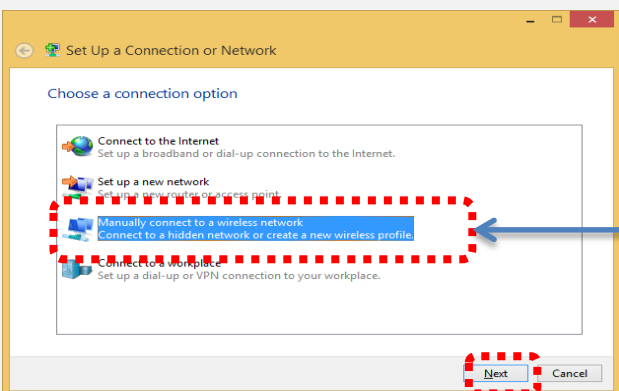
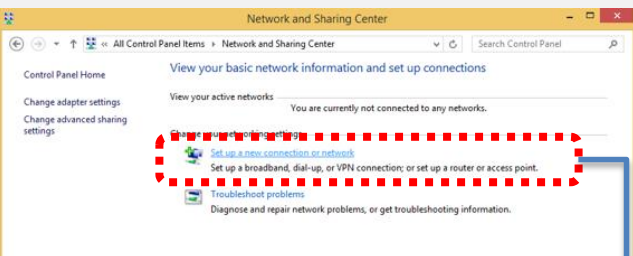
## 1. Start → Apps → Control Panel



## 2. Network and Sharing Center

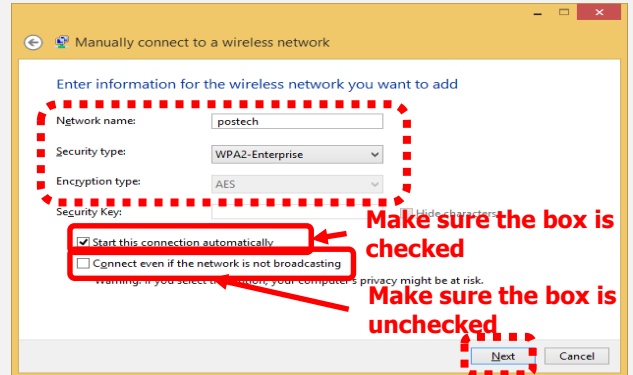


## 3. Set up a new connection or network → Manually connect to a wireless network

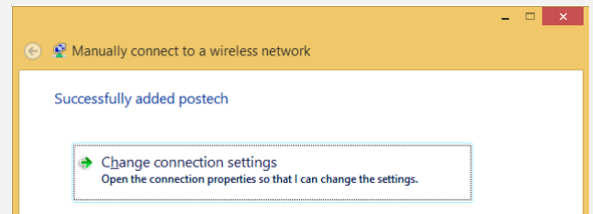


## 4. Enter information for the wireless network

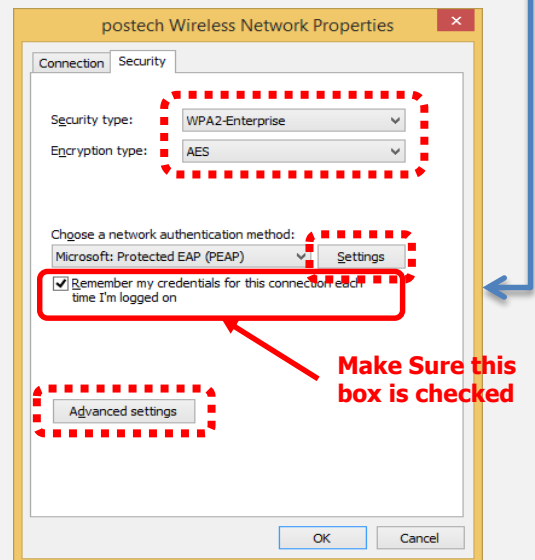
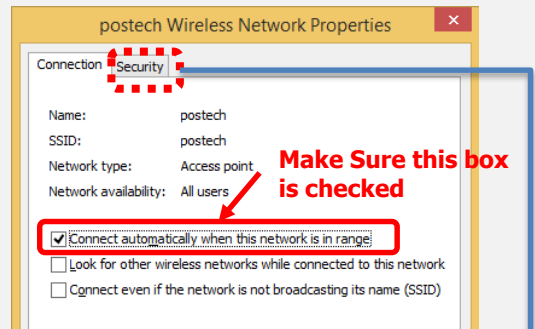
- Network Name: postech
- Security type: WPA2-Enterprise
- Encryption type: AES



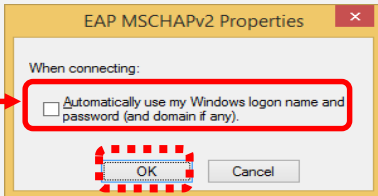
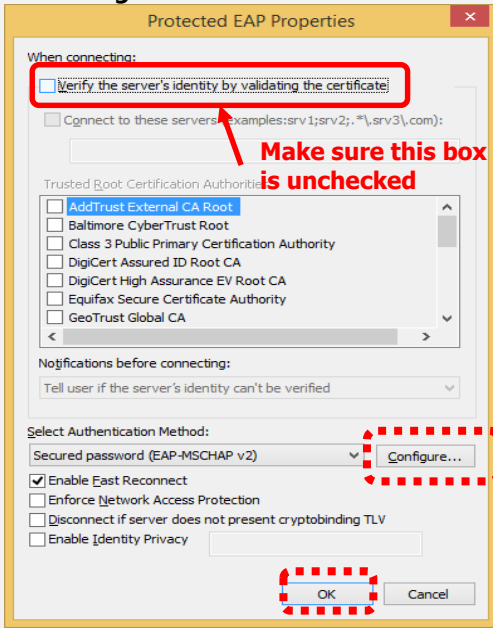
## 5. Successfully added postech → Change connection settings



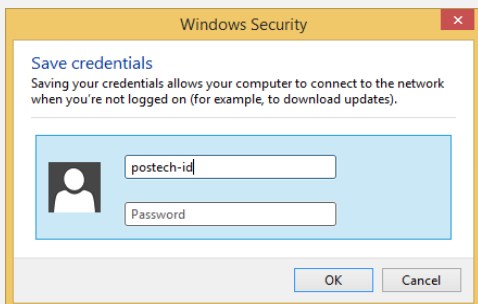
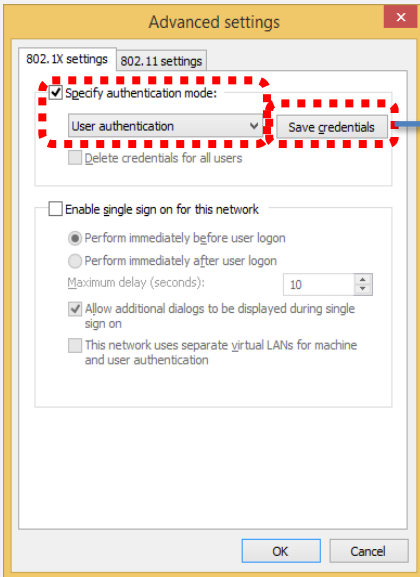
## 6. postech Wireless Network Properties



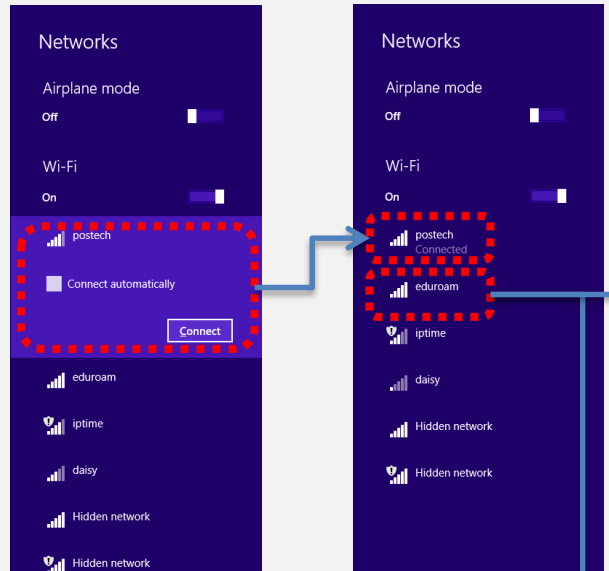
## 6-1. Settings



## 6-2. Advanced settings



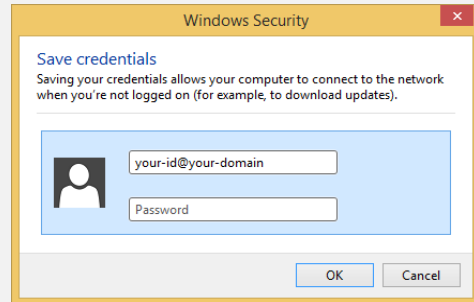
## 7. postech wireless network connect



Reference) eduroam, international free WiFi roaming service

- Same as postech Wi-Fi
- Login ID: your-ID@your-Domain

example1) POSTECH visitors



example2) POSTECH members are certified in the international eduroam service area

